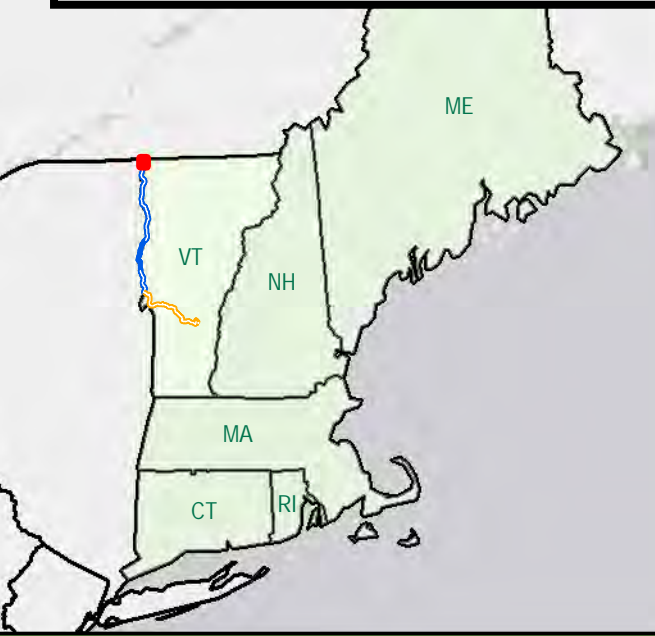


Appendix 6.1.TDI-NE.2

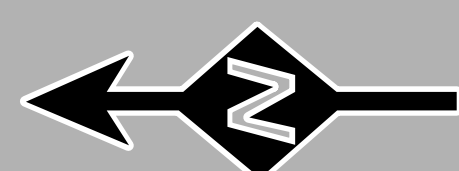
NECPL - Lake Segment Plans



Legend

- Mile Post - Whole
- Utility Crossing (Approximate)
- Proposed Overland Cable
- Proposed Lake HDD
- Proposed Lake Cable Construction Method
 - Diver Lay Installation
 - Install on Bottom
 - Jet Plow Installation
 - Shear Plow Installation
- VT Town Boundary (VCGI)
- NY State Boundary (NY GIS Program Office)
- Wildlife Management Areas
- Public & Conserved Lands
- Natural Areas (ANR)
- NHI Element Occurrence (VTFW)
 - RTE's
 - Natural Community

Sources: ESRI, TRC, HDR, VHB,
TDI New England, VCGI



0 1,000 2,000
Feet



New England Clean
Power Link

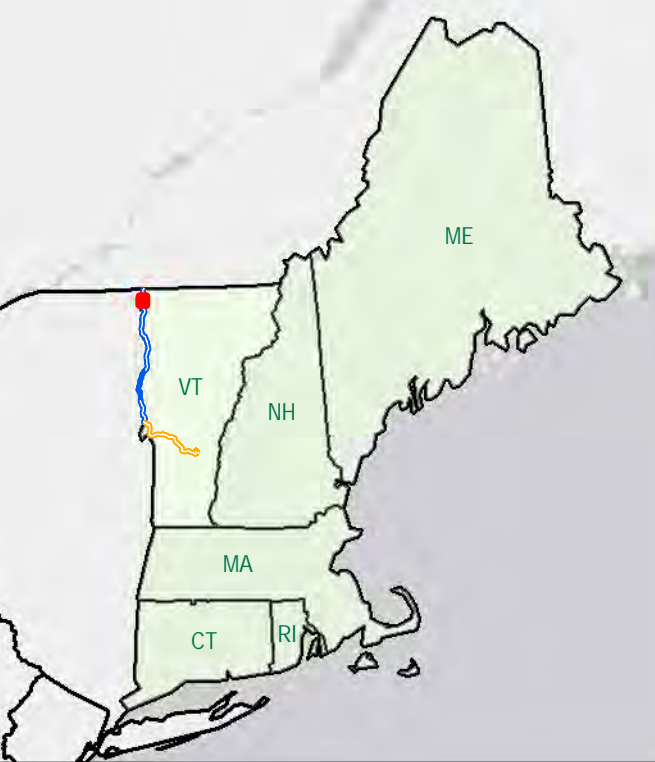
Lake Segment
*Grand Isle, Chittenden, Addison,
and Rutland Counties*

L-1

Created:
7/8/2015



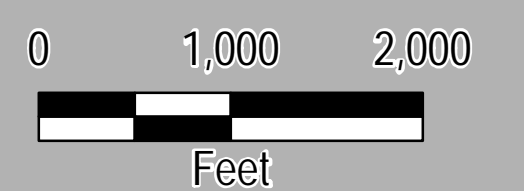
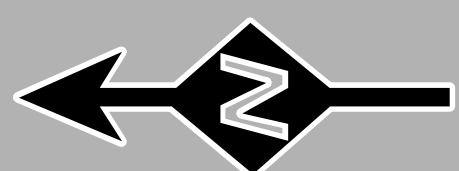
14 Gabriel Drive
Augusta, ME 04330



Legend

- Mile Post - Whole
- Utility Crossing (Approximate)
- Proposed Overland Cable
- Proposed Lake HDD
- Proposed Lake Cable Construction Method
 - Diver Lay Installation
 - Install on Bottom
 - Jet Plow Installation
 - Shear Plow Installation
- VT Town Boundary (VCGI)
- NY State Boundary (NY GIS Program Office)
- Wildlife Management Areas
- Public & Conserved Lands
- Natural Areas (ANR)
- NHI Element Occurrence (VTFW)
 - RTE's
 - Natural Community

Sources: ESRI, TRC, HDR, VHB, TDI New England, VCGI



New England Clean Power Link

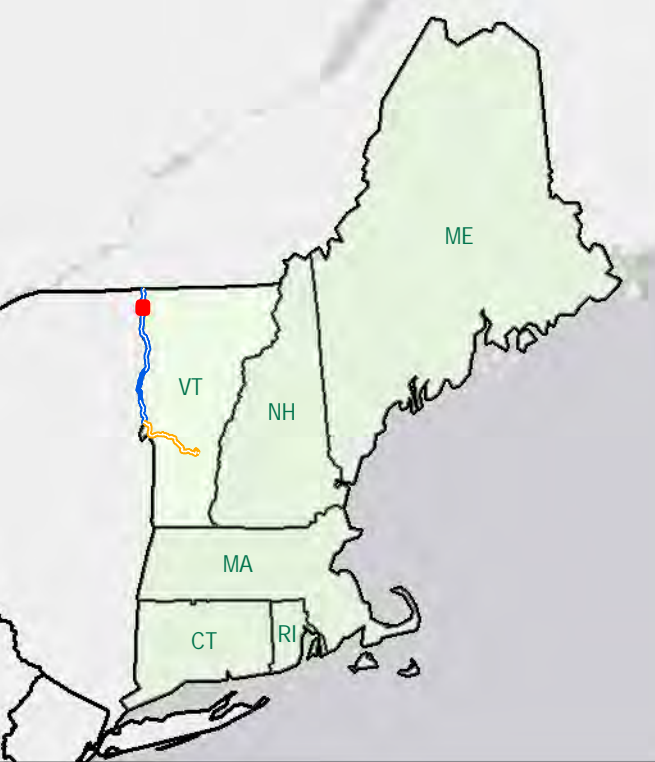
Lake Segment
Grand Isle, Chittenden, Addison, and Rutland Counties
L-2

Created: 7/8/2015



14 Gabriel Drive
Augusta, ME 04330

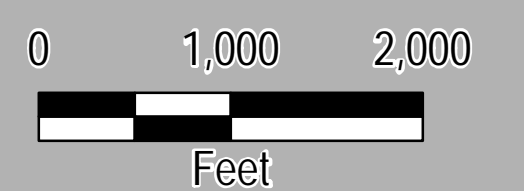
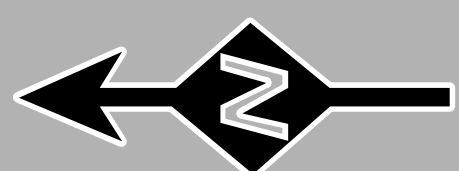




Legend

- Mile Post - Whole
- Utility Crossing (Approximate)
- Proposed Overland Cable
- Proposed Lake HDD
- Proposed Lake Cable Construction Method
 - Diver Lay Installation
 - Install on Bottom
 - Jet Plow Installation
 - Shear Plow Installation
- VT Town Boundary (VCGI)
- NY State Boundary (NY GIS Program Office)
- Wildlife Management Areas
- Public & Conserved Lands
- Natural Areas (ANR)
- NHI Element Occurrence (VTFW)
 - RTE's
 - Natural Community

Sources: ESRI, TRC, HDR, VHB, TDI New England, VCGI



New England Clean Power Link

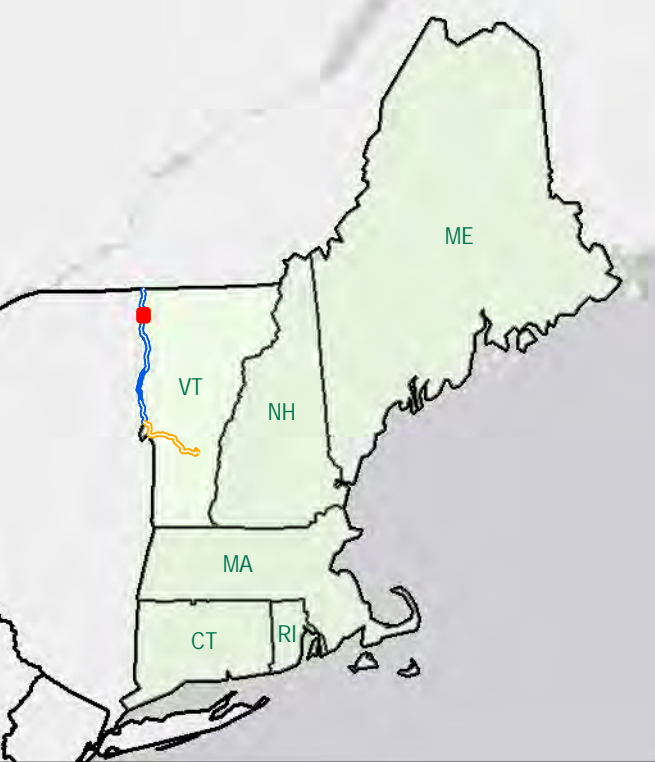
Lake Segment
Grand Isle, Chittenden, Addison,
and Rutland Counties

L-3

Created:
7/8/2015



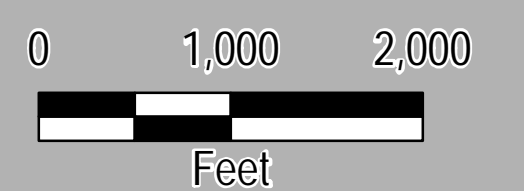
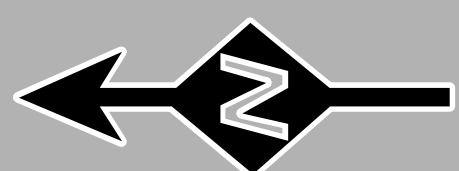
14 Gabriel Drive
Augusta, ME 04330



Legend

- Mile Post - Whole
- Utility Crossing (Approximate)
- Proposed Overland Cable
- Proposed Lake HDD
- Proposed Lake Cable Construction Method
 - Diver Lay Installation
 - Install on Bottom
 - Jet Plow Installation
 - Shear Plow Installation
- VT Town Boundary (VCGI)
- NY State Boundary (NY GIS Program Office)
- Wildlife Management Areas
- Public & Conserved Lands
- Natural Areas (ANR)
- NHI Element Occurrence (VTFW)
 - RTE's
 - Natural Community

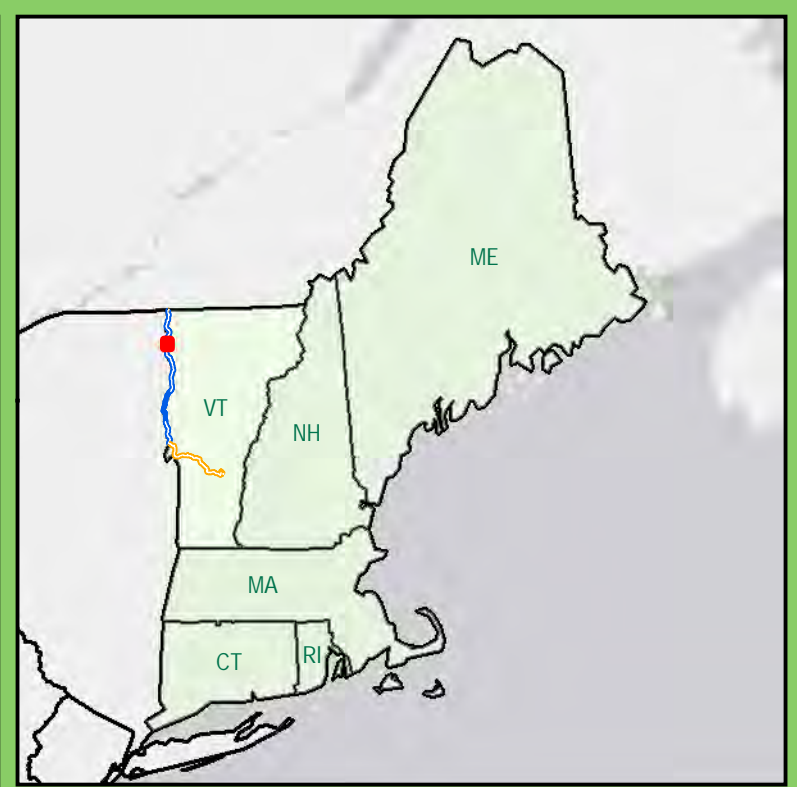
Sources: ESRI, TRC, HDR, VHB, TDI New England, VCGI



New England Clean Power Link

Lake Segment
Grand Isle, Chittenden, Addison, and Rutland Counties
L-4

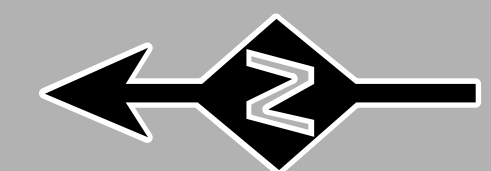




Legend

- Mile Post - Whole
- Utility Crossing (Approximate)
- Proposed Overland Cable
- Proposed Lake HDD
- Proposed Lake Cable Construction Method
 - Diver Lay Installation
 - Install on Bottom
 - Jet Plow Installation
 - Shear Plow Installation
- VT Town Boundary (VCGI)
- NY State Boundary (NY GIS Program Office)
- Wildlife Management Areas
- Public & Conserved Lands
- Natural Areas (ANR)
- NHI Element Occurrence (VTFW)
 - RTE's
 - Natural Community

Sources: ESRI, TRC, HDR, VHB, TDI New England, VCGI



New England Clean Power Link

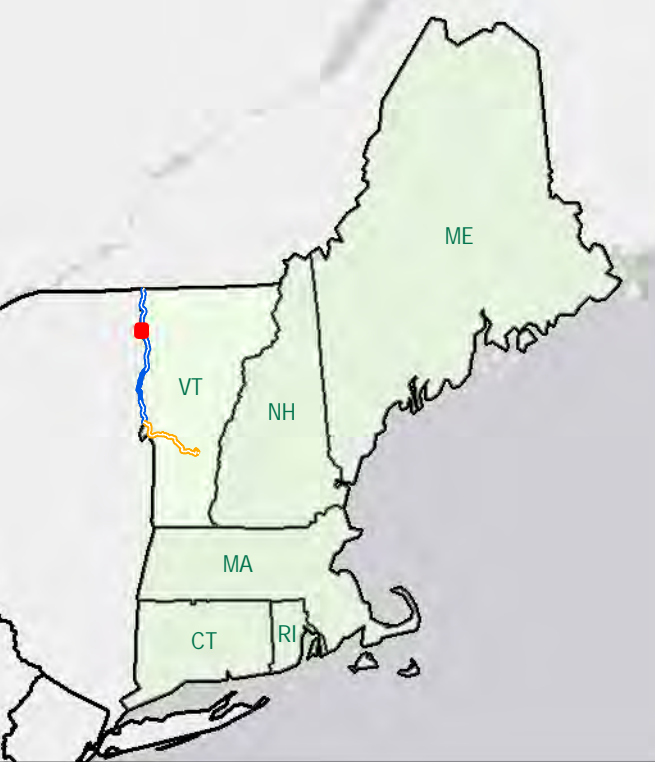
Lake Segment
Grand Isle, Chittenden, Addison, and Rutland Counties

L-5

Created:
7/8/2015



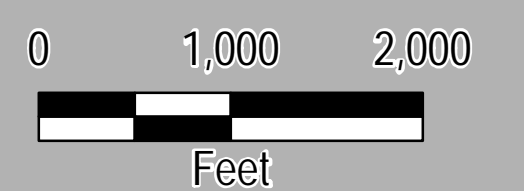
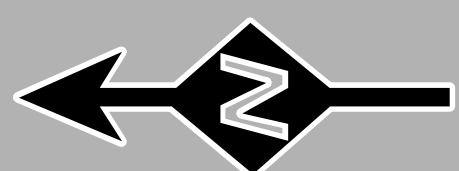
14 Gabriel Drive
Augusta, ME 04330



Legend

- Mile Post - Whole
- Utility Crossing (Approximate)
- Proposed Overland Cable
- Proposed Lake HDD
- Proposed Lake Cable Construction Method
 - Diver Lay Installation
 - Install on Bottom
 - Jet Plow Installation
 - Shear Plow Installation
- VT Town Boundary (VCGI)
- NY State Boundary (NY GIS Program Office)
- Wildlife Management Areas
- Public & Conserved Lands
- Natural Areas (ANR)
- NHI Element Occurrence (VTFW)
 - RTE's
 - Natural Community

Sources: ESRI, TRC, HDR, VHB, TDI New England, VCGI



New England Clean Power Link

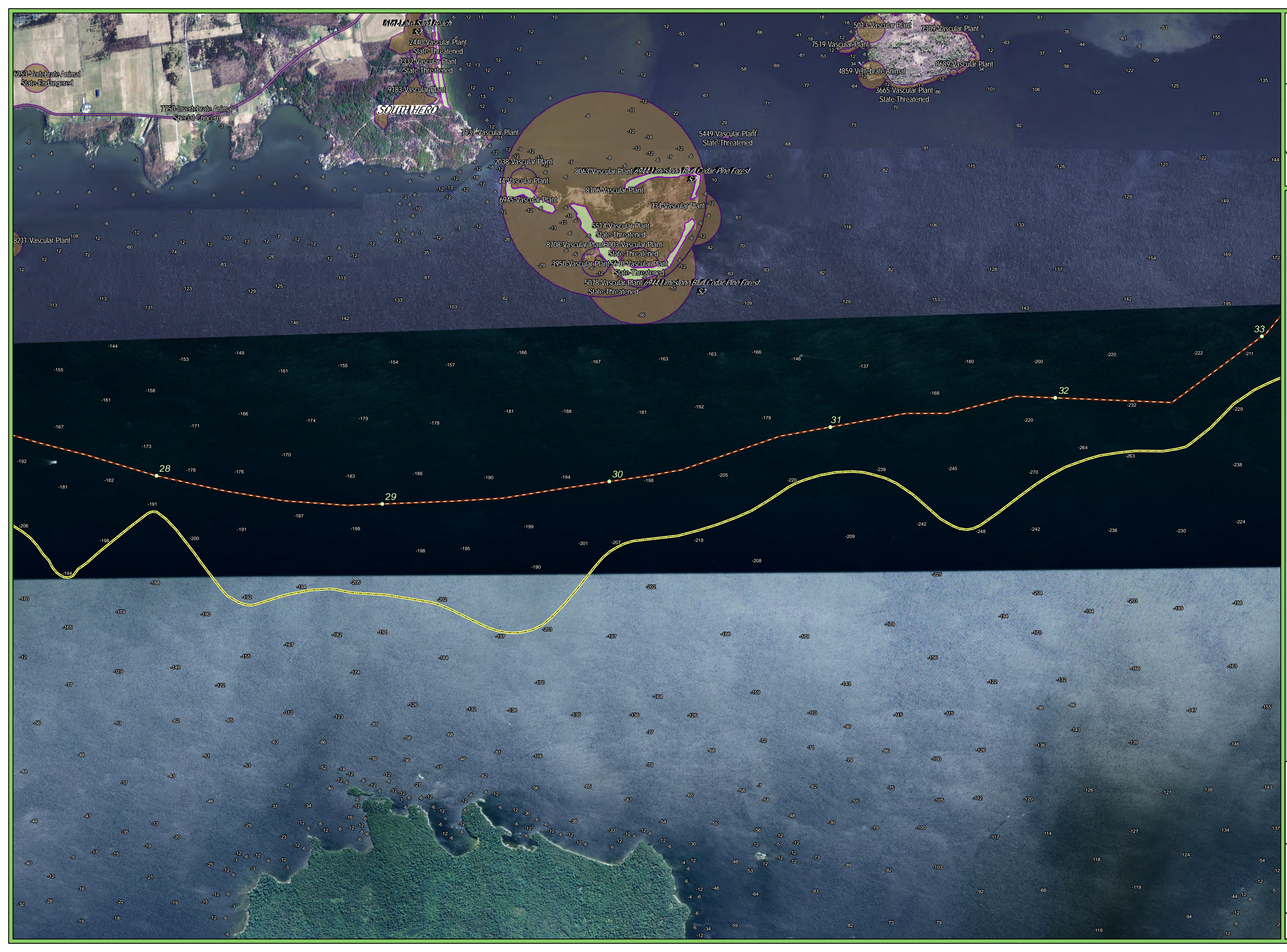
Lake Segment
Grand Isle, Chittenden, Addison,
and Rutland Counties

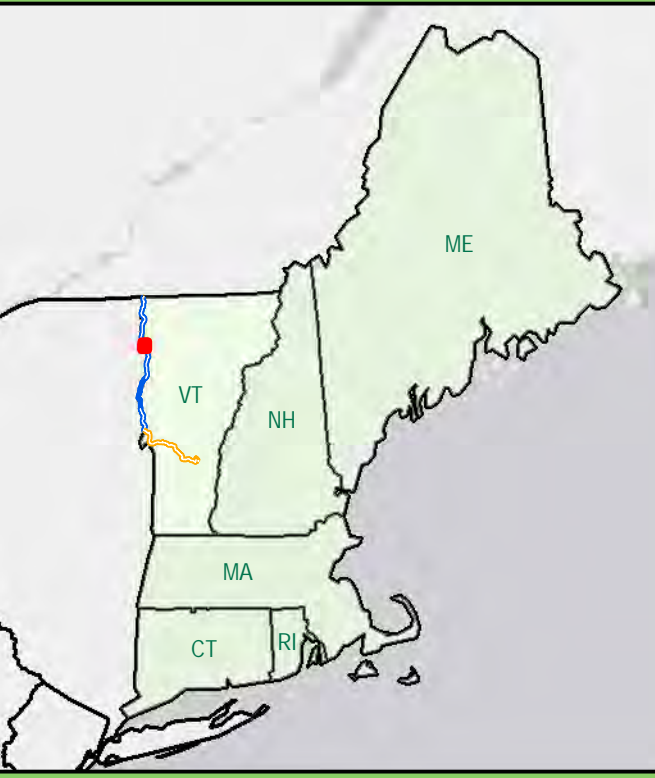
L-6

Created:
7/8/2015



14 Gabriel Drive
Augusta, ME 04330

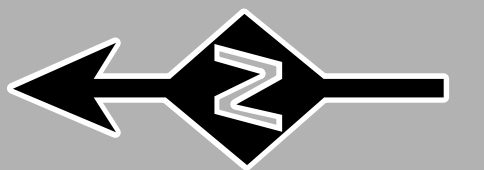




Legend

- Mile Post - Whole
- Utility Crossing (Approximate)
- Proposed Overland Cable
- Proposed Lake HDD
- Proposed Lake Cable Construction Method
 - Diver Lay Installation
 - Install on Bottom
 - Jet Plow Installation
 - Shear Plow Installation
- VT Town Boundary (VCGI)
- NY State Boundary (NY GIS Program Office)
- Wildlife Management Areas
- Public & Conserved Lands
- Natural Areas (ANR)
- NHI Element Occurrence (VTFW)
 - RTE's
 - Natural Community

Sources: ESRI, TRC, HDR, VHB, TDI New England, VCGI



0 1,000 2,000
Feet



A Blackstone Portfolio Company

New England Clean Power Link

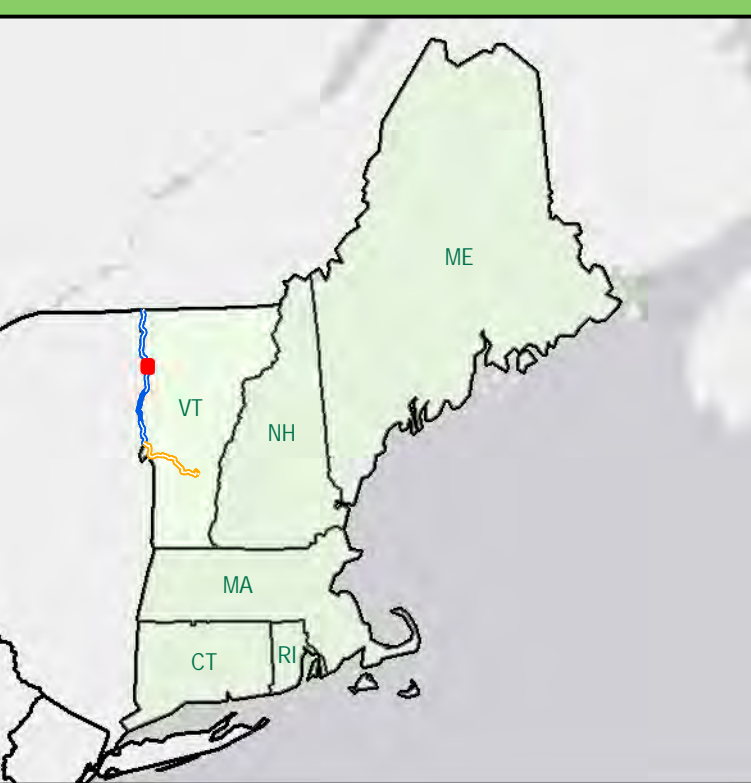
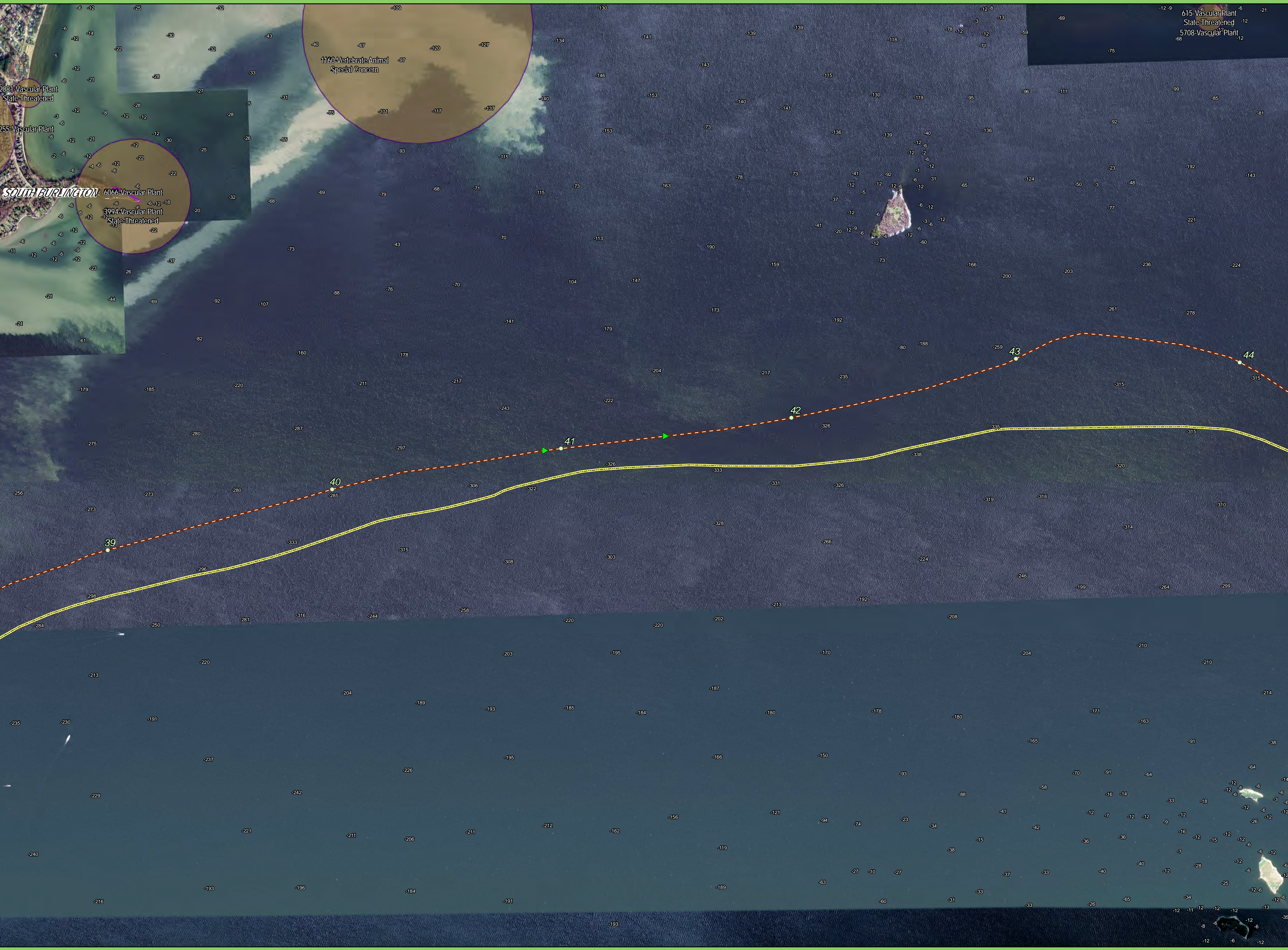
Lake Segment
*Grand Isle, Chittenden, Addison,
and Rutland Counties*

L-7

Created:
7/8/2015



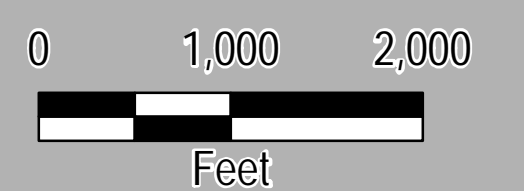
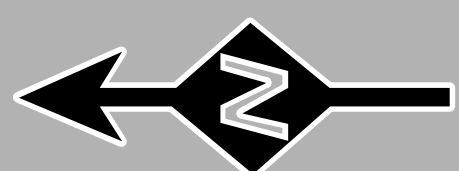
14 Gabriel Drive
Augusta, ME 04330



Legend

- Mile Post - Whole
- Utility Crossing (Approximate)
- Proposed Overland Cable
- Proposed Lake HDD
- Proposed Lake Cable Construction Method
 - Diver Lay Installation
 - Install on Bottom
 - Jet Plow Installation
 - Shear Plow Installation
- VT Town Boundary (VCGI)
- NY State Boundary (NY GIS Program Office)
- Wildlife Management Areas
- Public & Conserved Lands
- Natural Areas (ANR)
- NHI Element Occurrence (VTFW)
 - RTE's
 - Natural Community

Sources: ESRI, TRC, HDR, VHB, TDI New England, VCGI



TDI New England
A Blackstone Portfolio Company

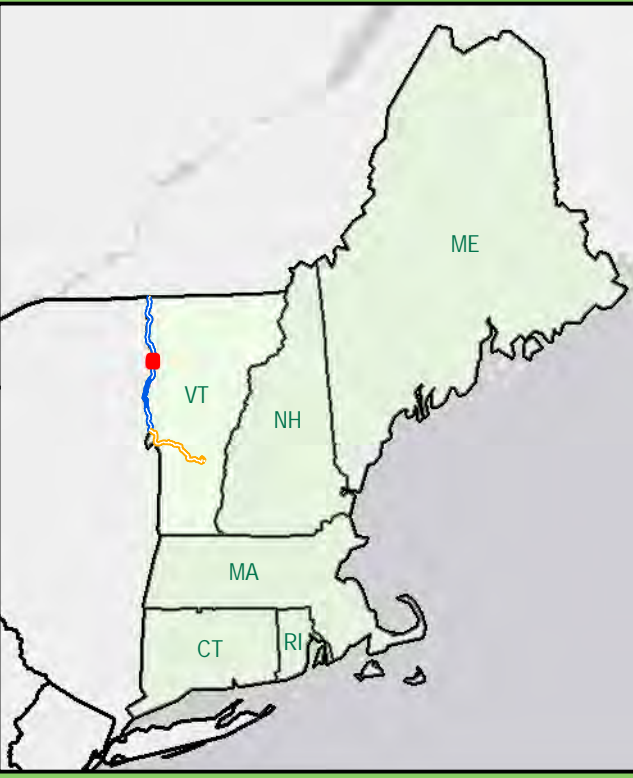
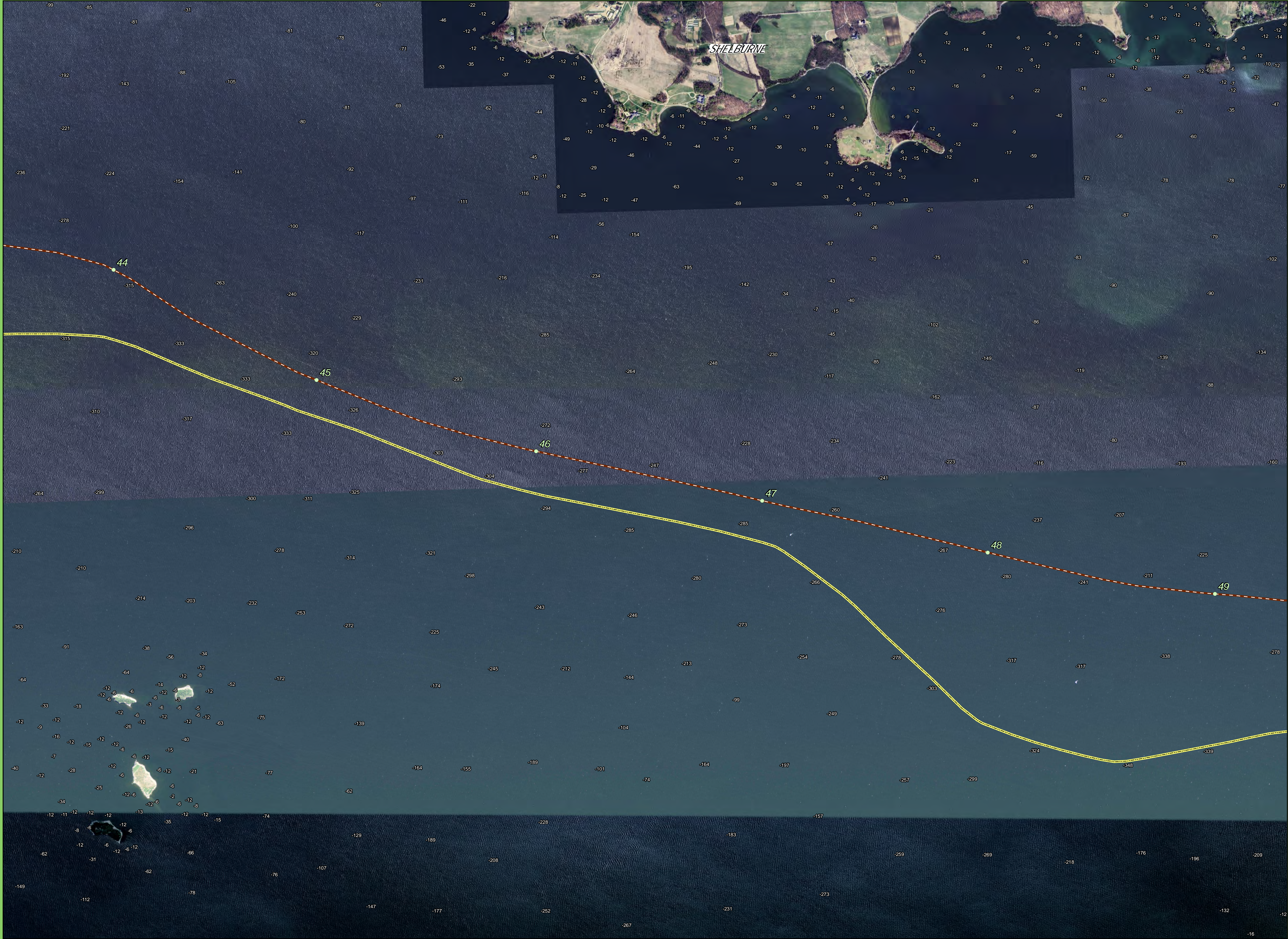
New England Clean Power Link

Lake Segment
Grand Isle, Chittenden, Addison, and Rutland Counties

L-8

Created: 7/8/2015

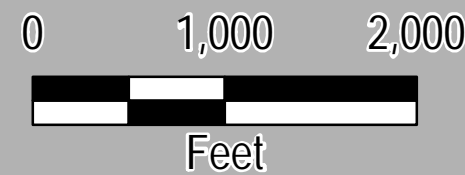
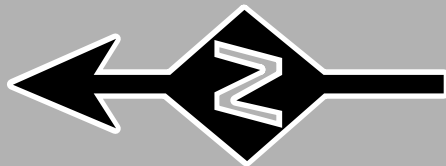
14 Gabriel Drive
Augusta, ME 04330



Legend

- Mile Post - Whole
- Utility Crossing (Approximate)
- Proposed Overland Cable
- Proposed Lake HDD
- Proposed Lake Cable Construction Method
 - Diver Lay Installation
 - Install on Bottom
 - Jet Plow Installation
 - Shear Plow Installation
- VT Town Boundary (VCGI)
- NY State Boundary (NY GIS Program Office)
- Wildlife Management Areas
- Public & Conserved Lands
- Natural Areas (ANR)
- NHI Element Occurrence (VTFW)
 - RTE's
 - Natural Community

Sources: ESRI, TRC, HDR, VHB, TDI New England, VCGI



New England Clean Power Link

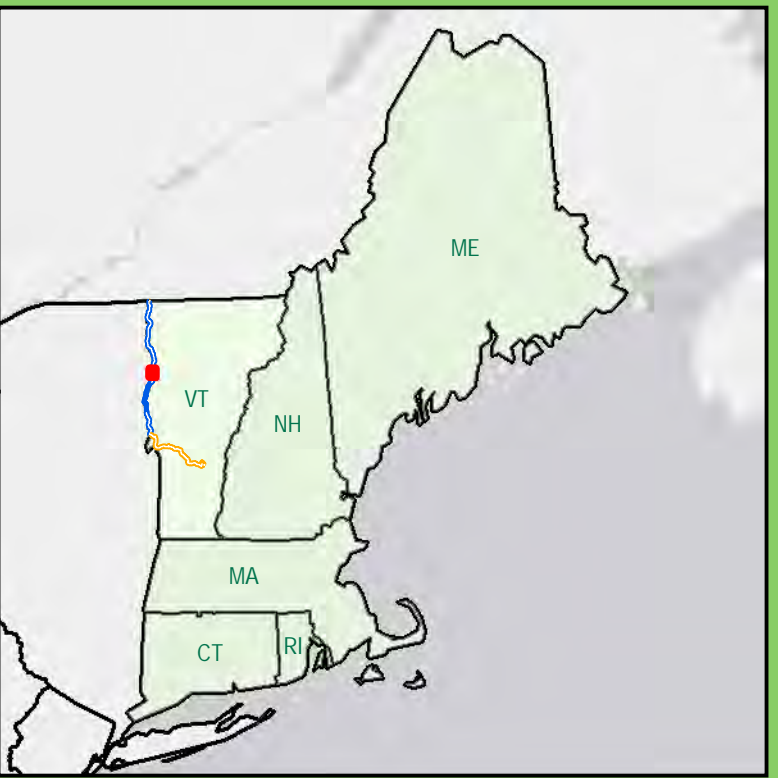
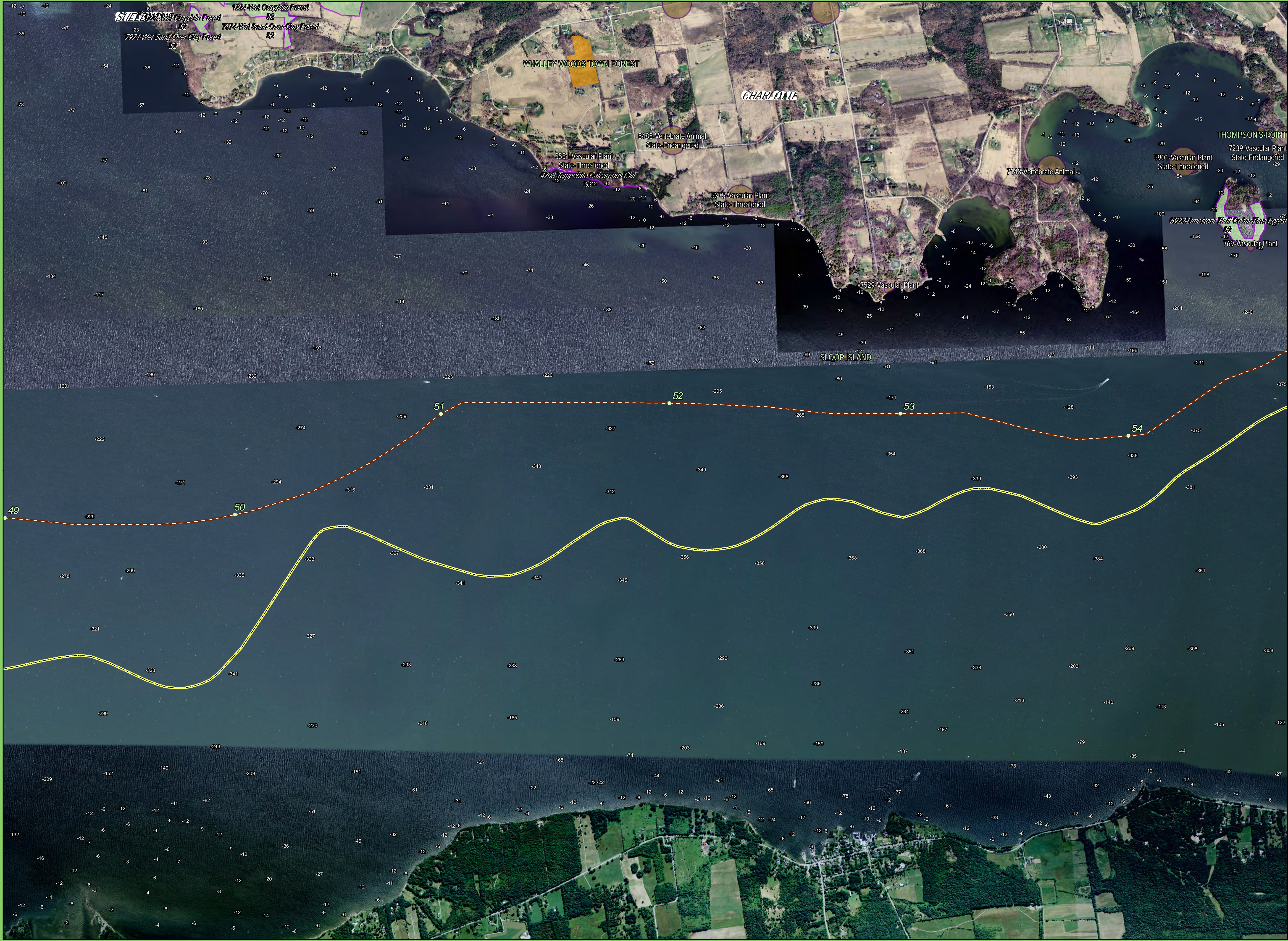
Lake Segment
Grand Isle, Chittenden, Addison, and Rutland Counties

L-9

Created:
7/8/2015



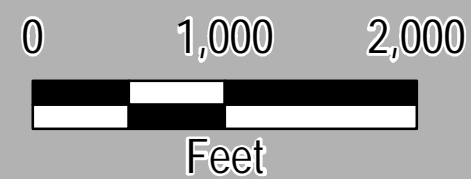
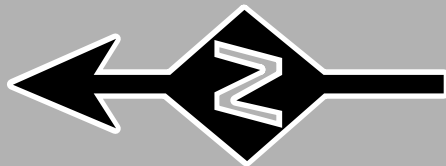
14 Gabriel Drive
Augusta, ME 04330



Legend

- Mile Post - Whole
- Utility Crossing (Approximate)
- Proposed Overland Cable
- Proposed Lake HDD
- Proposed Lake Cable Construction Method
 - Diver Lay Installation
 - Install on Bottom
 - Jet Plow Installation
 - Shear Plow Installation
- VT Town Boundary (VCGI)
- NY State Boundary (NY GIS Program Office)
- Wildlife Management Areas
- Public & Conserved Lands
- Natural Areas (ANR)
- NHI Element Occurrence (VTFW)
 - RTE's
 - Natural Community

Sources: ESRI, TRC, HDR, VHB, TDI New England, VCGI



New England Clean Power Link

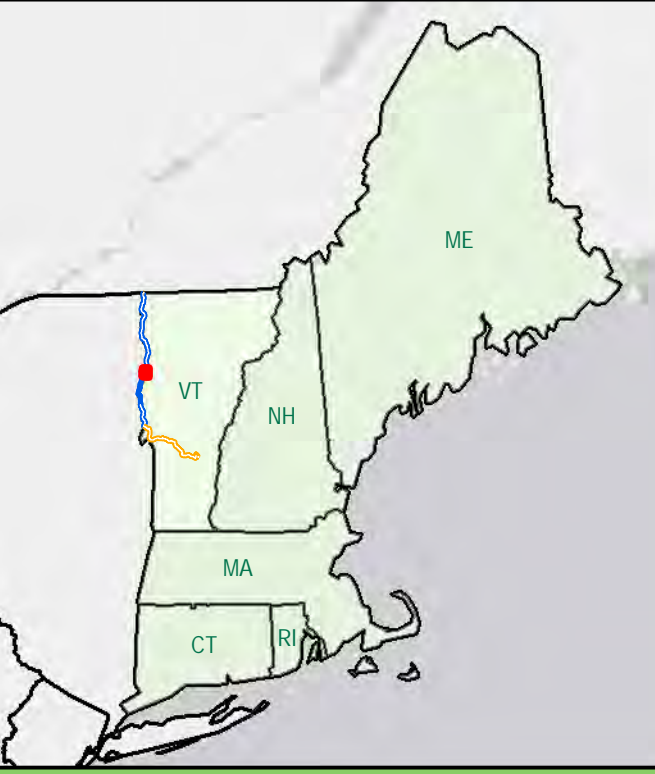
Lake Segment
Grand Isle, Chittenden, Addison, and Rutland Counties

L-10

Created: 7/8/2015



14 Gabriel Drive
Augusta, ME 04330



Legend

- Mile Post - Whole
- Utility Crossing (Approximate)
- Proposed Overland Cable
- Proposed Lake HDD

Proposed Lake Cable

Construction Method

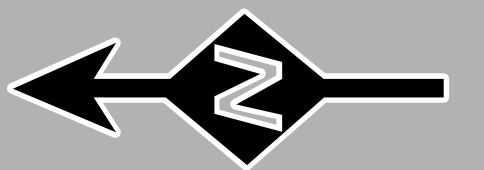
- Diver Lay Installation
- Install on Bottom
- Jet Plow Installation
- Shear Plow Installation
- VT Town Boundary (VCGI)
- NY State Boundary (NY GIS Program Office)

- Wildlife Management Areas
- Public & Conserved Lands
- Natural Areas (ANR)

NHI Element Occurrence (VTFW)

- RTE's
- Natural Community

Sources: ESRI, TRC, HDR, VHB, TDI New England, VCGI



0 1,000 2,000
Feet



New England Clean
Power Link

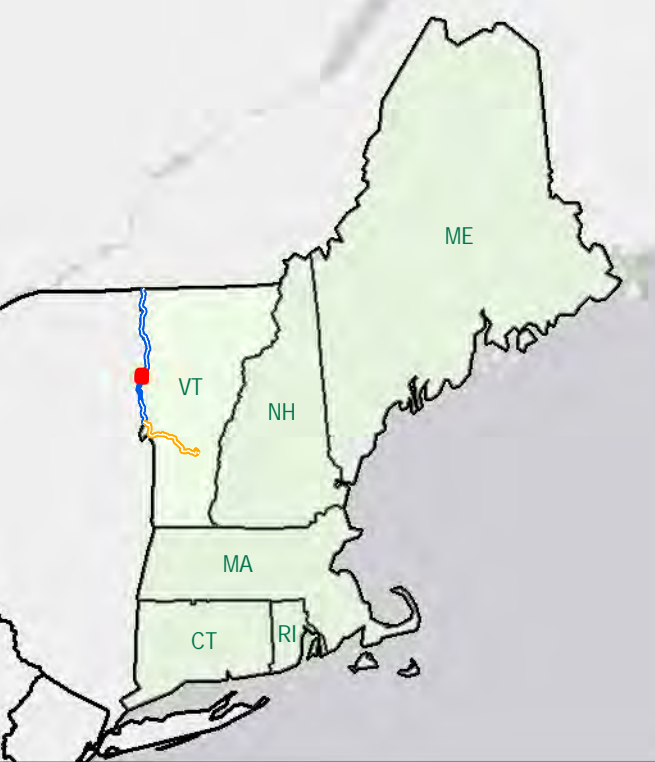
Lake Segment
*Grand Isle, Chittenden, Addison,
and Rutland Counties*

L-11

Created:
7/8/2015



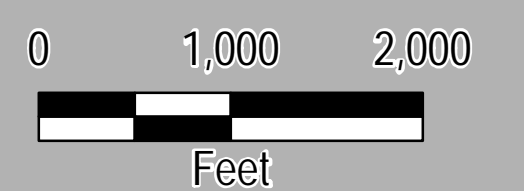
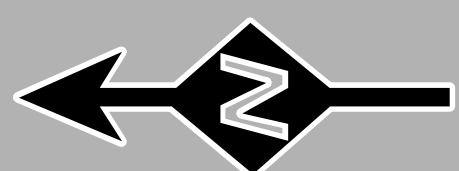
14 Gabriel Drive
Augusta, ME 04330



Legend

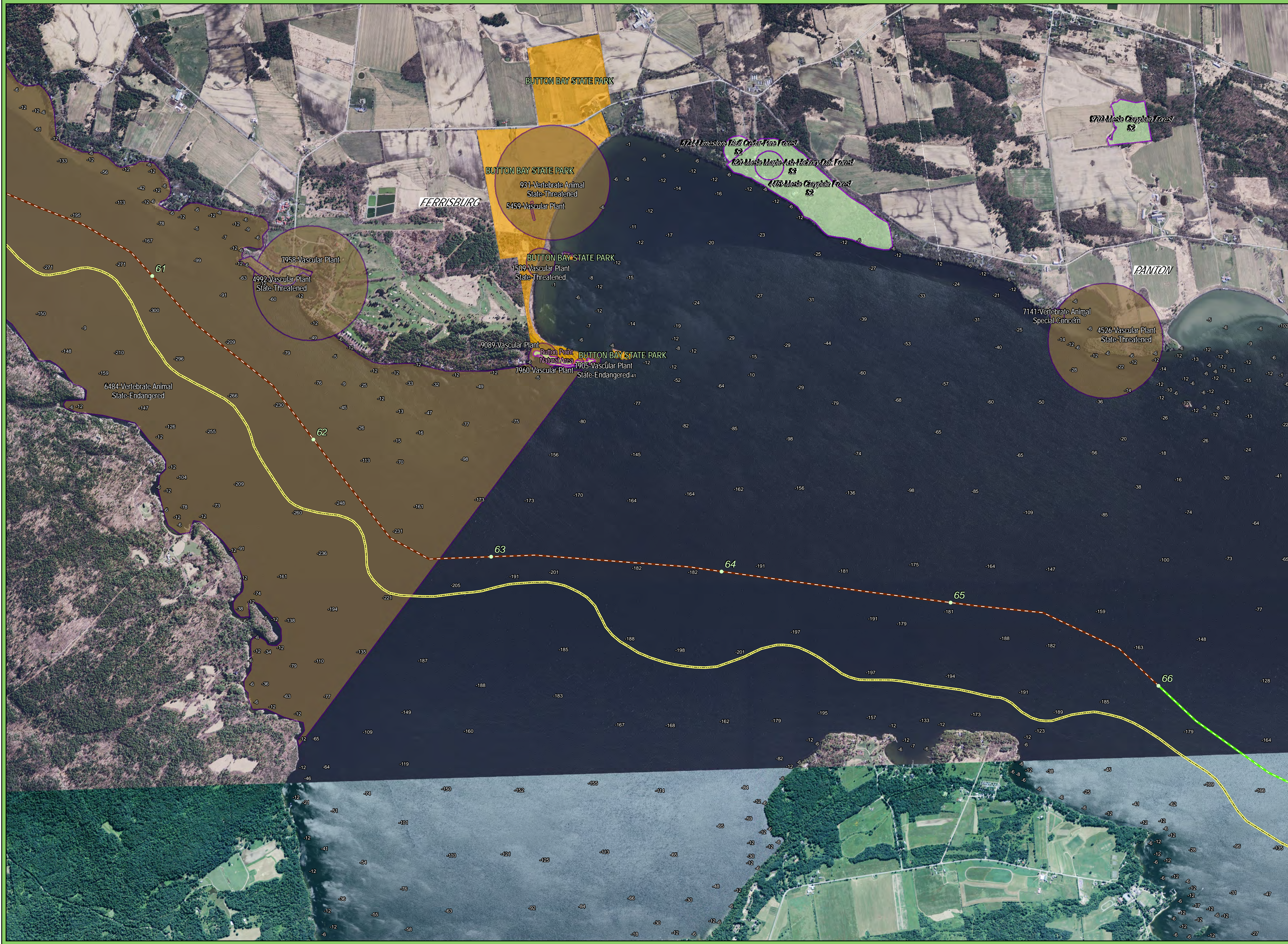
- Mile Post - Whole
- Utility Crossing (Approximate)
- Proposed Overland Cable
- Proposed Lake HDD
- Proposed Lake Cable Construction Method
 - Diver Lay Installation
 - Install on Bottom
 - Jet Plow Installation
 - Shear Plow Installation
- VT Town Boundary (VCGI)
- NY State Boundary (NY GIS Program Office)
- Wildlife Management Areas
- Public & Conserved Lands
- Natural Areas (ANR)
- NHI Element Occurrence (VTFW)
 - RTE's
 - Natural Community

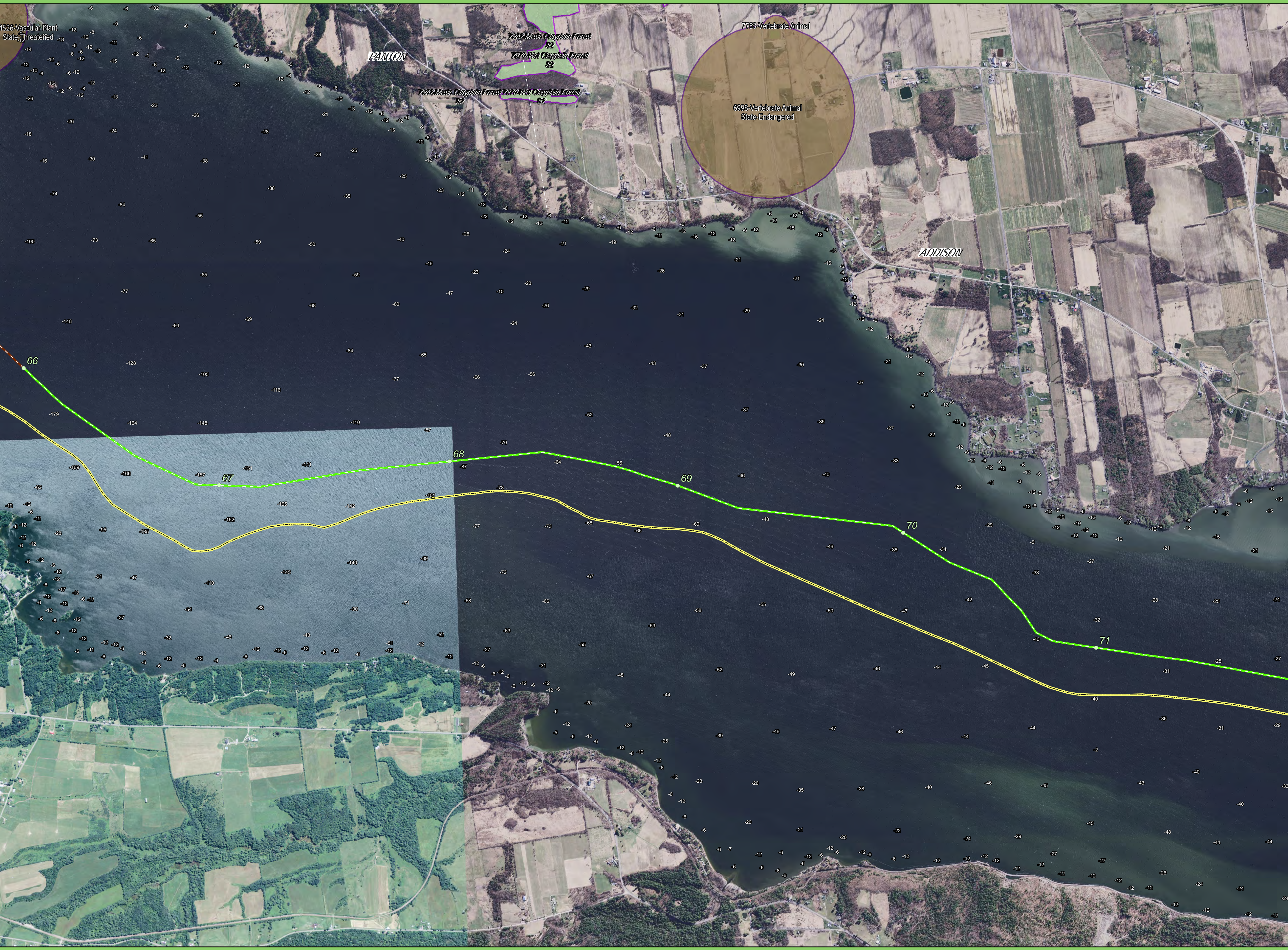
Sources: ESRI, TRC, HDR, VHB, TDI New England, VCGI



New England Clean Power Link

Lake Segment
Grand Isle, Chittenden, Addison,
and Rutland Counties
L-12

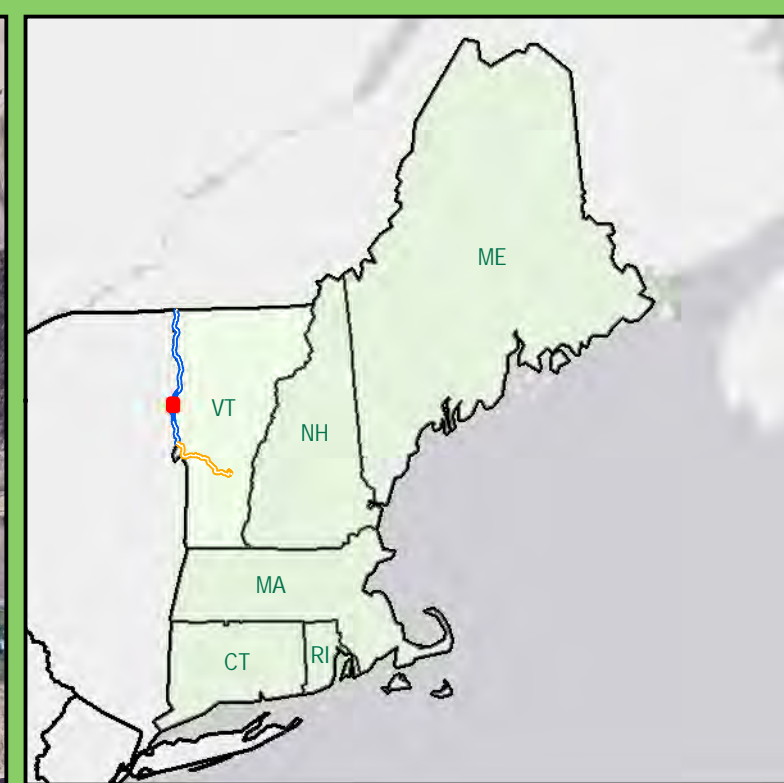




4526-Vascular Plant
State-Threatened

7002-Mesa Claypin Forest
S2
7004-Mesa Claypin Forest
S2

7753-Vertebrate Animal
6998-Vertebrate Animal
State-Endangered



Legend

- Mile Post - Whole
- Utility Crossing (Approximate)
- Proposed Overland Cable
- Proposed Lake HDD

Proposed Lake Cable Construction Method

- Diver Lay Installation
- Install on Bottom
- Jet Plow Installation
- Shear Plow Installation

VT Town Boundary (VCGI)

NY State Boundary (NY GIS Program Office)

Wildlife Management Areas

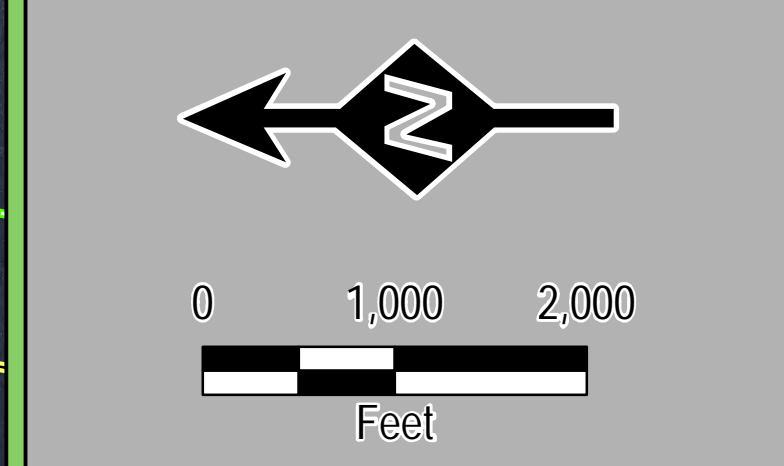
Public & Conserved Lands

Natural Areas (ANR)

NHI Element Occurrence (VTFW)

- RTE's
- Natural Community

Sources: ESRI, TRC, HDR, VHB, TDI New England, VCGI



TDI New England
A Blackstone Portfolio Company

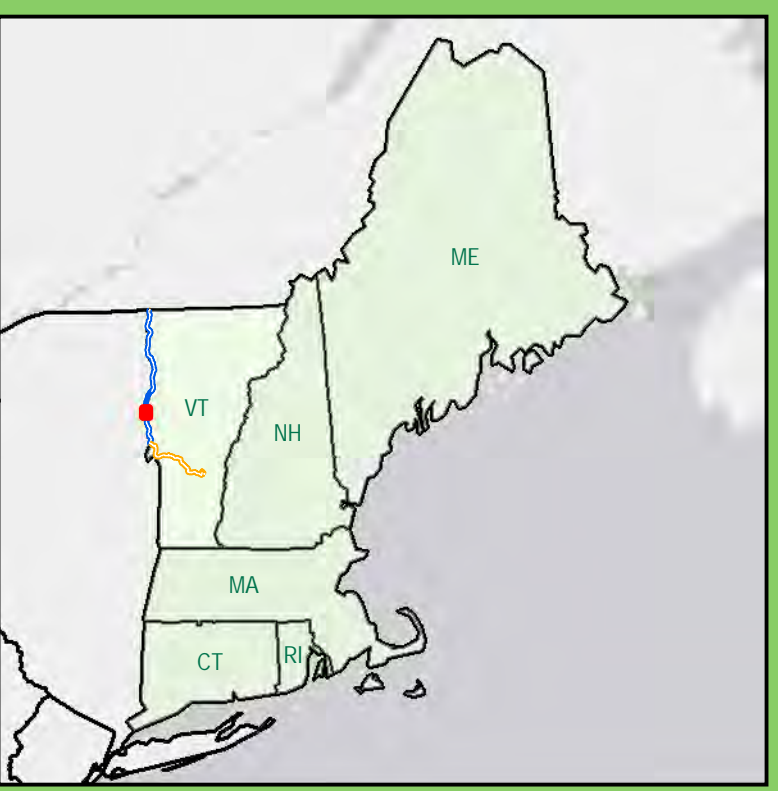
New England Clean Power Link

Lake Segment
Grand Isle, Chittenden, Addison, and Rutland Counties

L-13

Created: 7/8/2015

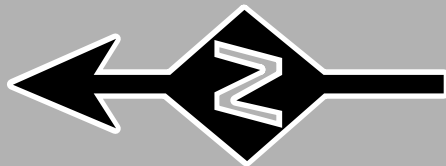
TRC 14 Gabriel Drive
Augusta, ME 04330



Legend

- Mile Post - Whole
- Utility Crossing (Approximate)
- Proposed Overland Cable
- Proposed Lake HDD
- Proposed Lake Cable Construction Method
 - Diver Lay Installation
 - Install on Bottom
 - Jet Plow Installation
 - Shear Plow Installation
- VT Town Boundary (VCGI)
- NY State Boundary (NY GIS Program Office)
- Wildlife Management Areas
- Public & Conserved Lands
- Natural Areas (ANR)
- NHI Element Occurrence (VTFW)
 - RTE's
 - Natural Community

Sources: ESRI, TRC, HDR, VHB, TDI New England, VCGI



0 1,000 2,000
Feet



New England Clean Power Link

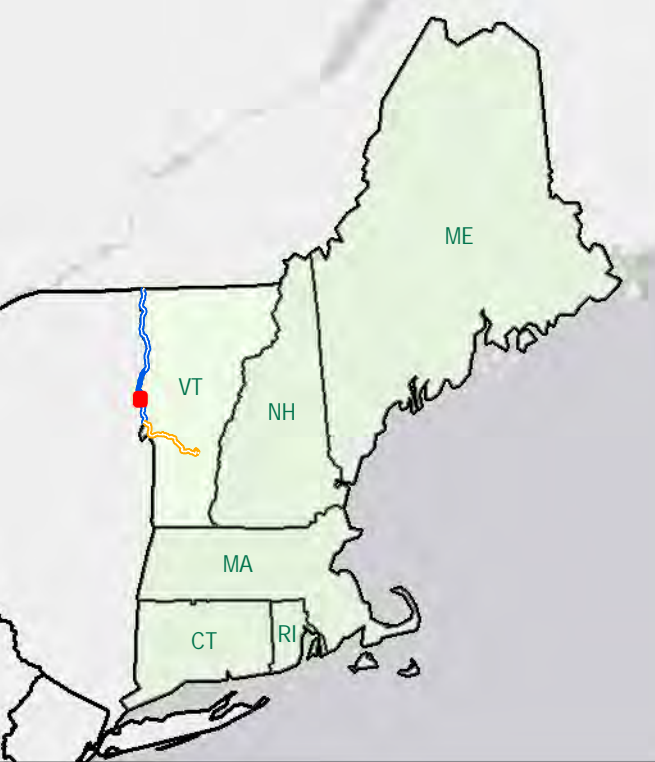
Lake Segment
Grand Isle, Chittenden, Addison,
and Rutland Counties

L-14

Created:
7/8/2015



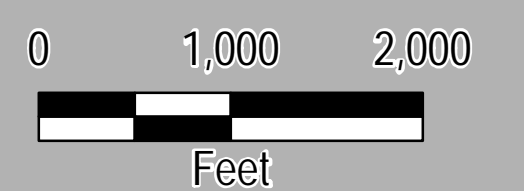
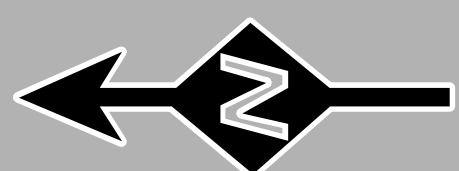
14 Gabriel Drive
Augusta, ME 04330



Legend

- Mile Post - Whole
- Utility Crossing (Approximate)
- Proposed Overland Cable
- Proposed Lake HDD
- Proposed Lake Cable Construction Method
 - Diver Lay Installation
 - Install on Bottom
 - Jet Plow Installation
 - Shear Plow Installation
- VT Town Boundary (VCGI)
- NY State Boundary (NY GIS Program Office)
- Wildlife Management Areas
- Public & Conserved Lands
- Natural Areas (ANR)
- NHI Element Occurrence (VTFW)
 - RTE's
 - Natural Community

Sources: ESRI, TRC, HDR, VHB, TDI New England, VCGI



New England Clean Power Link

Lake Segment
Grand Isle, Chittenden, Addison,
and Rutland Counties

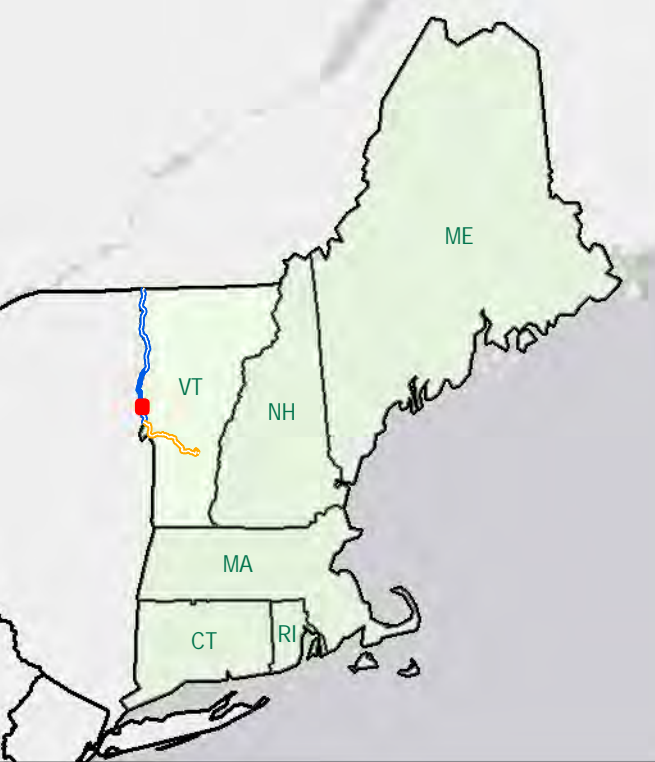
L-15

Created:
7/8/2015



14 Gabriel Drive
Augusta, ME 04330

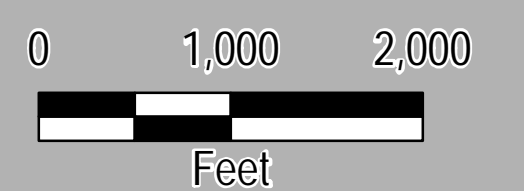




Legend

- Mile Post - Whole
- Utility Crossing (Approximate)
- Proposed Overland Cable
- Proposed Lake HDD
- Proposed Lake Cable Construction Method
 - Diver Lay Installation
 - Install on Bottom
 - Jet Plow Installation
 - Shear Plow Installation
- VT Town Boundary (VCGI)
- NY State Boundary (NY GIS Program Office)
- Wildlife Management Areas
- Public & Conserved Lands
- Natural Areas (ANR)
- NHI Element Occurrence (VTFW)
 - RTE's
 - Natural Community

Sources: ESRI, TRC, HDR, VHB, TDI New England, VCGI



New England Clean Power Link

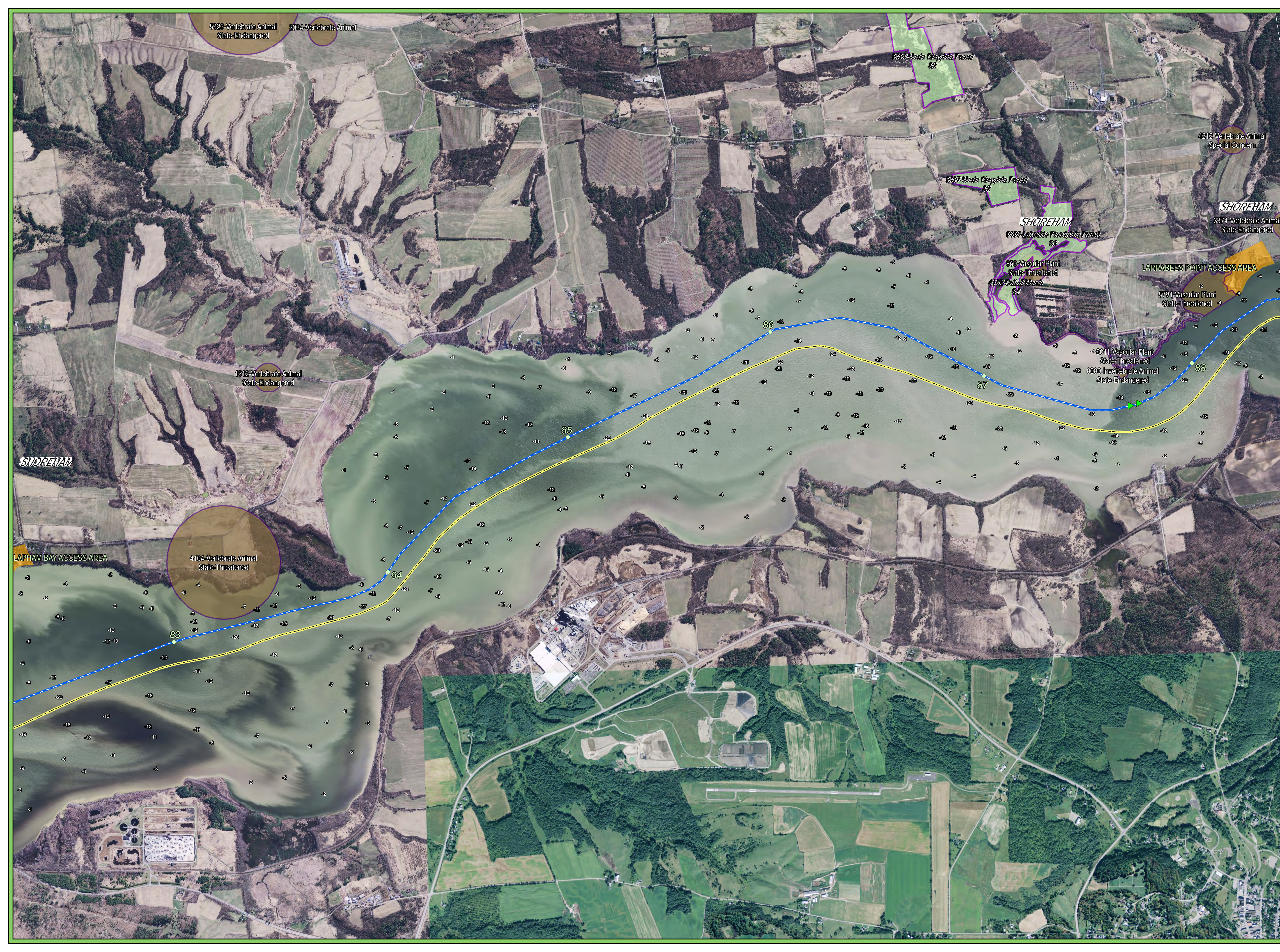
Lake Segment
Grand Isle, Chittenden, Addison,
and Rutland Counties

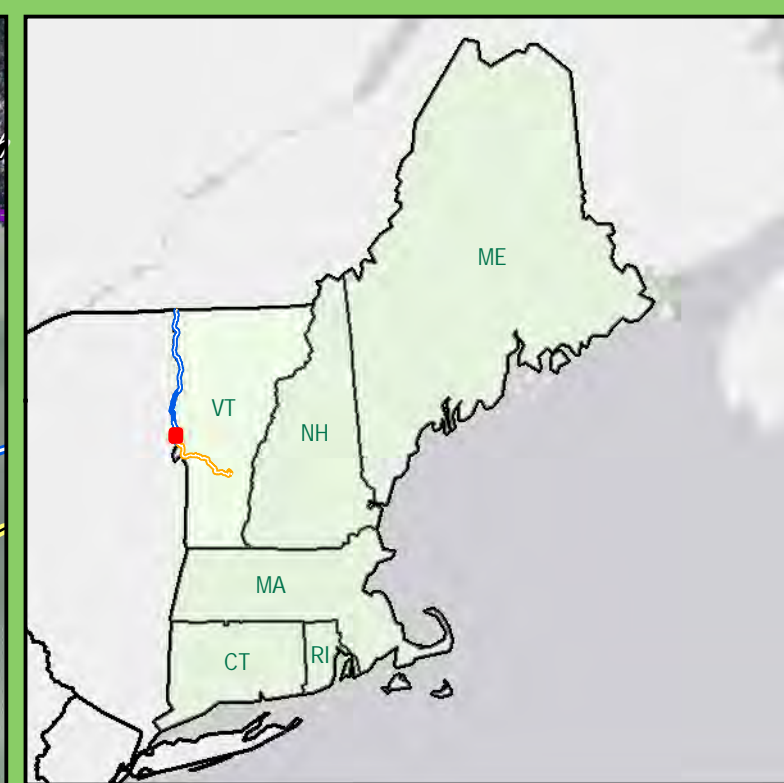
L-16

Created:
7/8/2015



14 Gabriel Drive
Augusta, ME 04330





Legend

- Mile Post - Whole
- Utility Crossing (Approximate)
- Proposed Overland Cable
- Proposed Lake HDD

Proposed Lake Cable Construction Method

- Diver Lay Installation
- Install on Bottom
- Jet Plow Installation
- Shear Plow Installation

VT Town Boundary (VCGI)

NY State Boundary (NY GIS Program Office)

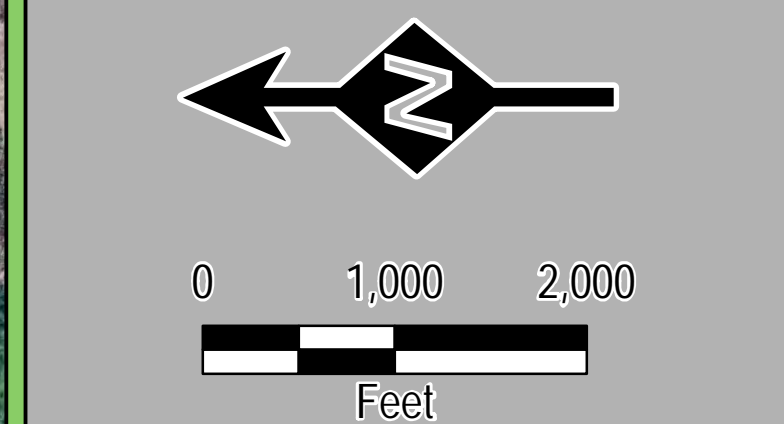
Wildlife Management Areas

- Public & Conserved Lands
- Natural Areas (ANR)

NHI Element Occurrence (VTFW)

- RTE's
- Natural Community

Sources: ESRI, TRC, HDR, VHB, TDI New England, VCGI



TDI New England
A Blackstone Portfolio Company

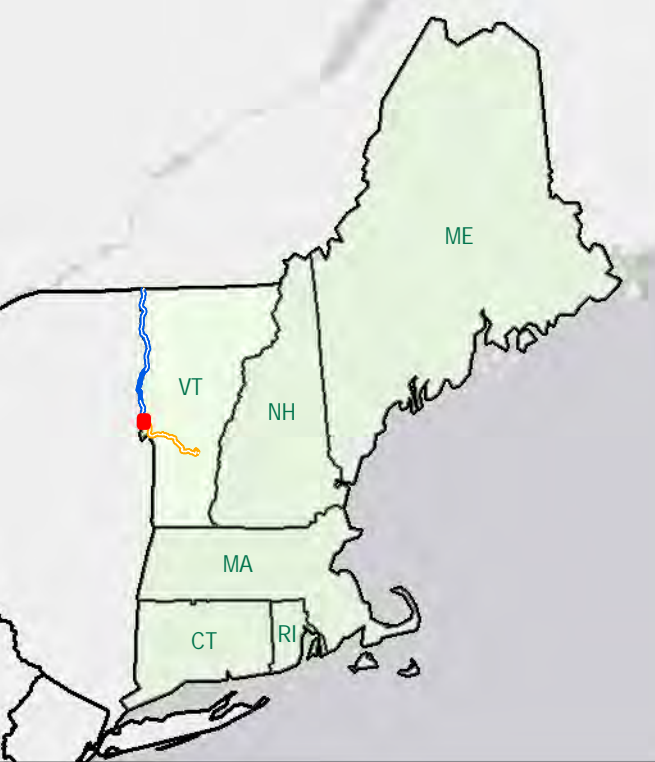
New England Clean Power Link

Lake Segment
Grand Isle, Chittenden, Addison, and Rutland Counties

L-17

Created: 7/8/2015

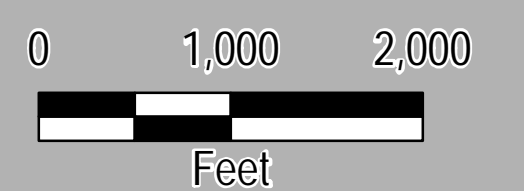
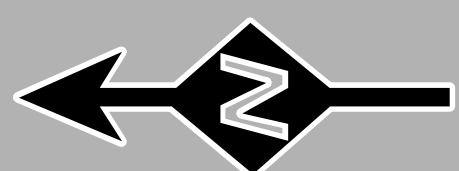
TRC 14 Gabriel Drive
Augusta, ME 04330



Legend

- Mile Post - Whole
- Utility Crossing (Approximate)
- Proposed Overland Cable
- Proposed Lake HDD
- Proposed Lake Cable Construction Method
 - Diver Lay Installation
 - Install on Bottom
 - Jet Plow Installation
 - Shear Plow Installation
- VT Town Boundary (VCGI)
- NY State Boundary (NY GIS Program Office)
- Wildlife Management Areas
- Public & Conserved Lands
- Natural Areas (ANR)
- NHI Element Occurrence (VTFW)
 - RTE's
 - Natural Community

Sources: ESRI, TRC, HDR, VHB, TDI New England, VCGI



New England Clean Power Link

Lake Segment
Grand Isle, Chittenden, Addison,
and Rutland Counties

L-18

Created:
7/8/2015



14 Gabriel Drive
Augusta, ME 04330

